

CERTIFICATE OF LOCATION OF GOVERNMENT CORNER

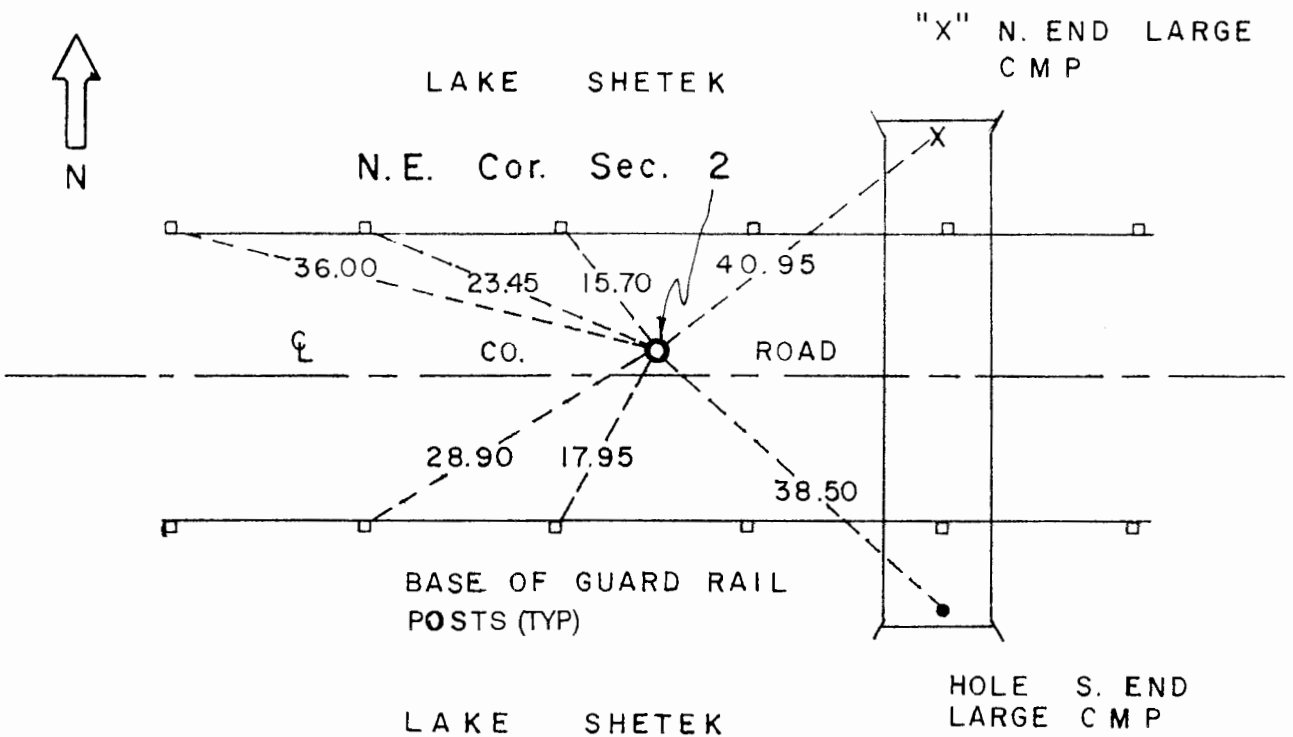
Northeast Corner of Section **2**, Township **107**, Range **41** 5th P.M.

STATE OF MINNESOTA, County of Murray.

Statement:

Oct. 30, 1989 - Found a 3/4 inch x 12 inch re-rod at the pavement surface. Removed the monument and placed a Minnesota Department of Transportation Cast Iron Monument

SKETCH OF REFERENCE TIES



Statement of evidence relative to this corner location is on the back of page.

I hereby certify that this document and the data contained herein was prepared by me or under my direct supervision and that I am a duly Registered Land Surveyor under the laws of the State of Minnesota.

Duane A. Bonnema 2-25-91
 Duane A. Bonnema Date

Minnesota Registration No. 14895

OFFICE OF THE COUNTY RECORDER
 COUNTY OF MURRAY

MAR 1 1991

I hereby certify that this document was filed in the County Recorder's office at ___ M. on the ___ day of _____ A.D., 19__

County Recorder *James V. Johnson*
 By _____, Deputy
 DOCUMENT NO. _____

Northeast Cor. Sec. 2 T107N-R41W

Statement:

- July 1861 *Original Government Land Office Surveyor J. W. Myers records in his field notes, "Point for corner to Sections 1, 2, 35 & 36 in marsh."*
- Nov. 1969 *The Murray County Highway Engineer's Records show that they found a field stone and placed a steel pin at the bituminous surface. They also established witness ties to the Corner.*
- 1968-1984 *The following plats were done using this section corner position:*
1968 *"EDGEWATER BEACH" by E. C. Bather & Assoc.*
1976 *"EDGEWATER BEACH FIRST ADDITION" by RCM*
1976 *"LAKE VIEW DRIVE ADDITION" by RCM*
1984 *"SHOREWOOD ESTATES" by RCM*
- Oct. 30, 1989 *Duane A. Bonnema, LS Reg. No. 14895, found the witness ties recorded by the County in 1969. Measurements were taken and it was determined that this was the corner used by the platting which was done in the surrounding area between 1969 and 1984. A hole was dug at this location. A 3/4 inch x 12 inch re-bar was found at the pavement surface. A small hole was dug to a depth of 3 feet where topsoil was encountered. A probe rod was pushed down to a depth of 5 1/2 feet below the road surface, however no stone was discovered. It is possible that the stone was destroyed during road construction. A Minnesota Department of Transportation Cast Iron Monument was placed at the location determined by the county witness ties and iron re-bar.*